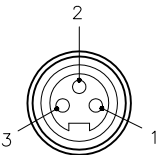

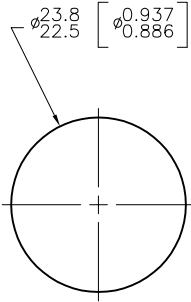
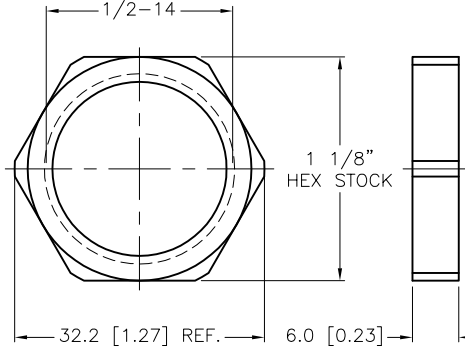
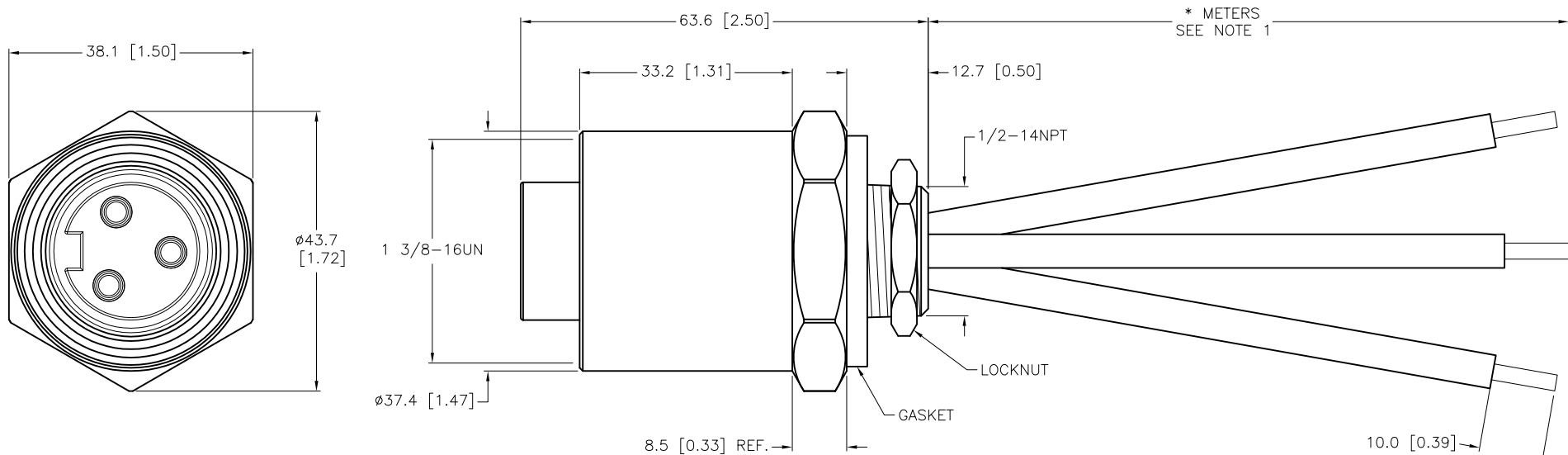


FEMALE END VIEW	PANEL CUTOUT	LOCKNUT	SPECIFICATIONS	
 <p>1 = BLACK 2 = GREEN 3 = WHITE</p> 			CONTACT CARRIER MATERIAL	PVC
			CONTACT MATERIAL/PLATING	BRASS or COPPER/GOLD
			HOUSING MATERIAL/FINISH	STAINLESS STEEL/PASSIVATED
			GASKET MATERIAL	NITRILE (BUNA-N)
			RATED CURRENT [A]	25 A
			RATED VOLTAGE [V]	600 V
			CONDUCTOR INSULATION MATERIAL	PVC
			NUMBERS OF CONDUCTORS [AWG]	3x12 AWG
			TEMPERATURE RATING	-40°C to +105°C (-40°F to +221°F)
			PROTECTION CLASS	MEETS NEMA 1,3,4,6P AND IEC IP67, IP68, IP69K
			MAXIMUM PANEL THICKNESS	6.0mm [.236]



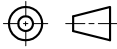
CABLE LENGTH	TOLERANCE *
ALL LENGTHS	+ 4% (OR 50mm) OF LENGTH - 0% (OR 0mm) OF LENGTH WHICHEVER IS GREATER
STRIP LENGTH	TOLERANCE *
0-7mm	±0.5mm
8-29mm	±1.0mm
30-49mm	±2.0mm
50-69mm	±3.0mm
70-100mm	±4.0mm
OVER 100mm	±5.0mm
* UNLESS OTHERWISE SPECIFIED	

NOTES:

1. "*" INDICATES LEAD LENGTH IN METERS. CONTACT TURCK TO ORDER SPECIFIC LENGTHS.



SOURCE DRAWING - FOR REFERENCE ONLY

RELATED DOCUMENTS		3RD ANGLE PROJECTION		<div>THIS DRAWING IS CONFIDENTIAL AND THE PROPERTY OF TURCK INC. USE OF THIS DOCUMENT WITHOUT WRITTEN PERMISSION IS PROHIBITED.</div> <div>TURCK INC <i>High Technology Sensors and Automation Controls</i></div> <div>3000 CAMPUS DRIVE MINNEAPOLIS, MN 55441 1-800-544-7769 (763) 553-7300 (763) 553-0708 fax turck.com</div>			
1. 2. 3. 4.							
MATERIAL		DRFT	RDS	DATE	02/04/09	DESCRIPTION GKDFV 32-*M/14.5/NPT	
SEE SPECIFICATIONS		APVD		SCALE	1=1.0		
FINISH		UNIT OF MEASUREMENT				IDENTIFICATION NO.	
SEE SPECIFICATIONS		MILLIMETER [INCH]					
		DO NOT SCALE THIS DRAWING				REV B	
		B DRAWING PROCESSED AS PART OF ECO 39011				KMY 06/12/12 39011	
		REV DESCRIPTION				BY DATE ECO NO.	
						FILE: 777018349	
						SHEET 1 OF 1	